



FASTEKS® Quick fasteners

Simple Installation, secure hold, extremely efficient

The center of excellence for high-performance fastening technology

KVT-Fastening is an expert for high-quality fastening applications and offers engineering solutions based on the wide product portfolio of the leading manufacturers in the market.



Mechanical engineering | Automotive | Electrical engineering | Energy | Precision engineering | Fluid power | Transportation | Off-shore and Marine | Medical equipment
Aviation and aerospace | Construction industry | Watch manufacturing industry

www.kvt-fastening.com



High-performance solutions from KVT-Fastening are found wherever absolutely safe and secure connections are essential. These small but extremely resilient components play key roles where it matters most – whether in the electronics and energy sector, the automotive and transportation industries, aviation and aerospace, engineering and construction, precision engineering, or medical equipment.

KVT-Fastening does not just supply standard products and individual components, but also provides close and active customer support in the search for ideal solutions, particularly when specific requirements must be fulfilled. This portfolio is complemented by a range of innovative tools and

machines as well as, if needed, the integration into automated serial production workflows.

Ever since 1927, KVT-Fastening has stood for experience, solution-driven know-how, unique expertise in development and consultancy as well as the ultimate in reliability. Since December 2012, KVT-Fastening is a member of the Bossard Group. Bossard is a leading provider of intelligent solutions for industrial fastening technology. The range includes global sales, technical consulting (engineering) and logistics of fastening technology components and bolts. Customers benefit from the extension of competencies in industrial fastening technology and from an optimally enhanced product or service portfolio.



Quick fasteners – rich in variety for secure and efficient installation

KVT-fastening quick fastening systems reduce weight, compensate tolerances and impress designers with their absolutely efficient handling in a wide range of applications. Simple to install, flexible and solid – quick fasteners provide reliable hold for joints of different materials and surfaces.

- **FASTEKS KLIPKO® cage nuts** are clamped with a pincer from the back side. The nut also has a range of movement within its cage and permits a large tolerance compensation. In long holes this can be extended as needed.
- **FASTEKS KLIPKO® cage nuts with earth continuity** have cramps which penetrate the varnish layer and contact the components while screwing.

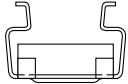
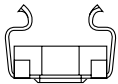

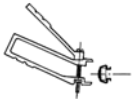
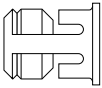
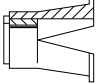
- **FASTEKS KLIPKO® front assembling cage nuts** can be cramped in hollow profiles or bent plates after varnishing simply with a screwdriver or narrow metal stripe. Can be disassembled and reused at any time.

- **FASTEKS STECKO®** and **FASTEKS NILKO®** offer quick assembly without the need for an auxiliary tool. The system automatically anchors itself when the screw is turned. The difference is in the cage material: Stecko with metal cage for medium torques, Nilko with insulating polyamide cage for electrical applications.

More about FASTEKS®
www.kvt-fastening.de/en/products/brands/fasteks



Contents

6 – 7	FASTEKS KLIPKO® Cage nut Standard	
8	FASTEKS KLIPKO® Cage nut with earth continuity	
9	FASTEKS KLIPKO® Cage nut, front assembling	
10	FASTEKS KLIPKO® Tool	
11	FASTEKS STECKO® Blind nut / metal version	
12	FASTEKS NILKO® Blind nut / polyamide version	
13 – 14	Overview of product range quick fastener	

All dimensions are specified in mm.

Cage nuts

FASTEKS KLIPKO®



Standard

Material Type R

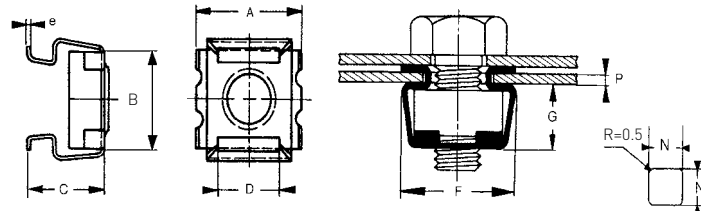
Cage: Stainless steel
Nut: Steel, zinc plated

Material Type RR

Cage: Stainless steel
Nut: Stainless steel

Material Type ZI

Cage: Spring steel, zinc plated
Nut: Steel, zinc plated



3-D Data: <http://kvt.partcommunity.com>

Thread size	Order description (see ordering data example)	P = Panel thickness	Hole size ¹⁾ □N	Nut size	A	B	C	D	e	F	G	Hole size code
M3	M3 ... -053-09	0.3 – 0.9	5.3	8x8x2.5	9.3	8.8	5.2	4.8	0.3	9.7	3.6	1
	M3 ... -053-16	1.0 – 1.6					5.9					
	M3 ... -053-23	1.7 – 2.3					6.6					
	M3 ... -053-31 ²⁾	2.4 – 3.1					7.4					
M4	M4 ... -053-09	0.3 – 0.9	5.3	8x8x2.5	9.3	8.8	5.2	4.8	0.3	9.7	3.6	1
	M4 ... -053-16	1.0 – 1.6					5.9					
	M4 ... -053-23	1.7 – 2.3					6.6					
	M4 ... -053-31 ²⁾	2.4 – 3.1					7.4					
	M4 ... -067-16	0.7 – 1.6	6.7	8x8x3.5	10.0	9.0	7.2	5.8	0.45	10.3	4.8	2
	M4 ... -067-25	1.7 – 2.5					8.2					
	M4 ... -083-11	0.3 – 1.1	8.3	10x10x4.5	12.0	11.4	8.0	7.2	0.45	12.2	6.0	3
	M4 ... -083-16	1.2 – 1.6					8.5					
	M4 ... -083-25	1.7 – 2.5					9.5					
	M4 ... -083-35	2.6 – 3.5					10.5					
	M4 ... -083-45	3.6 – 4.5					11.5					
	M4 ... -095-16	0.7 – 1.6	9.5	11x11x4.5	13.2	12.0	8.8	8.0	0.45 0.50 ⁴⁾	13.6	6.2	4
	M4 ... -095-27	1.7 – 2.7					9.5					
	M4 ... -095-35	2.8 – 3.5					10.2					
M5	M5 ... -067-16	0.7 – 1.6	6.7	8x8x3.5	10.0	9.0	7.2	5.8	0.45	10.3	4.8	2
	M5 ... -067-25	1.7 – 2.5					8.2					
	M5 ... -083-11	0.3 – 1.1	8.3	10x10x4.5	12.0	11.4	8.0	7.2	0.45	12.2	6.0	3
	M5 ... -083-16	1.2 – 1.6					8.5					
	M5 ... -083-25	1.7 – 2.5					9.5					
	M5 ... -083-35	2.6 – 3.5					10.5					
	M5 ... -083-45	3.6 – 4.5					11.5					
	M5 ... -095-16	0.7 – 1.6	9.5	11x11x4.5	13.2	12.0	8.8	8.0	0.45 0.50 ⁴⁾	13.6	6.2	4
	M5 ... -095-27	1.7 – 2.7					9.5					
	M5 ... -095-35	2.8 – 3.5					10.2					

¹⁾ Slit width must be reduced by approx. 0.3 mm when using in long holes.

²⁾ Type ZI not available

⁴⁾ Applies only for type ZI

Cage nuts

FASTEKS KLIPKO®



Standard

see page 6

Ordering data example

Thread size	Type	Hole size □N	Panel thickness	Order description
M5	R	8,3	1,7 – 2,5	M5-R-083-25
M6	ZI	9,5	1,0 – 1,6	M6-ZI-095-16
M8	RR	12,3	1,8 – 3,2	M8RR-123-32

3-D Data: <http://kvt.partcommunity.com>

Thread size	Order description (see ordering data example)	P = Panel thickness	Hole size ¹⁾ □N	Nut size	A	B	C	D	e	F	G	Hole size code
M6	M6 ... -083-11	0.3 – 1.1	8.3	10x10x4.5	12.0	11.4	8.0	7.2	0.45	12.2	6.0	3
	M6 ... -083-16	1.2 – 1.6					8.5					
	M6 ... -083-25	1.7 – 2.5					9.5					
	M6 ... -083-35	2.6 – 3.5					10.5					
	M6 ... -083-45	3.6 – 4.5					11.5					
	M6 ... -095-16	0.7 – 1.6	9.5	11x11x4.5	13.2	12.0	8.8	8.0	0.45 0.50 ⁴⁾	13.6	6.2	4
	M6 ... -095-27	1.7 – 2.7					9.5					
	M6 ... -095-35	2.8 – 3.5					10.2					
	M6 ... -123-17	1.0 – 1.7	12.3	14x14x5.5	16.0	15.5	10.4	10.6	0.50 0.60 ⁴⁾	17.0	7.8	5
	M6 ... -123-32	1.8 – 3.2					12.0					
M6 ... -123-47	3.3 – 4.7	13.5										
M6 ... -123-55	4.8 – 5.5	14.5										
M8	M8 ... -123-17	1.0 – 1.7	12.3	14x14x5.5	16.0	15.5	10.4	10.6	0.50 0.60 ⁴⁾	17.0	7.8	5
	M8 ... -123-32	1.8 – 3.2					12.0					
	M8 ... -123-47	3.3 – 4.7					13.5					
	M8 ... -123-55	4.8 – 5.5	14.0	17x17x7.5	20.0	19.4	14.5	12.6	0.60	20.5	10.4	6
	M8 ... -140-17 ³⁾	1.0 – 1.7					13.5					
	M8 ... -140-32 ³⁾	1.8 – 3.2					15.0					
	M8 ... -140-47 ³⁾	3.3 – 4.7					16.5					
M8 ... -140-62 ³⁾	4.8 – 6.2	18.0										
M10	M10 ... -123-17	1.0 – 1.7	12.3	14x14x5.5	16.0	15.5	10.4	10.6	0.50 0.60 ⁴⁾	17.0	7.8	5
	M10 ... -123-32	1.8 – 3.2					12.0					
	M10 ... -123-47	3.3 – 4.7					13.5					
	M10 ... -123-55	4.8 – 5.5					14.5					
	M10 ... -140-17	1.0 – 1.7	14.0	17x17x7.5	20.0	19.4	13.5	12.6	0.60	20.5	10.4	6
	M10 ... -140-32	1.8 – 3.2					15.0					
	M10 ... -140-47	3.3 – 4.7					16.5					
M10 ... -140-62	4.8 – 6.2	18.0										
M12	M12 ... -140-17	1.0 – 1.7	14.0	17x17x7.5	20.0	19.4	13.5	12.6	0.60	20.5	10.4	6
	M12 ... -140-32	1.8 – 3.2					15.0					
	M12 ... -140-47	3.3 – 4.7					16.5					
	M12 ... -140-62	4.8 – 6.2					18.0					

¹⁾ Slit width must be reduced by approx. 0.3 mm when using in long holes.

³⁾ RR type on request

⁴⁾ Applies only for type ZI

Cage nuts

FASTEKS KLIPKO®

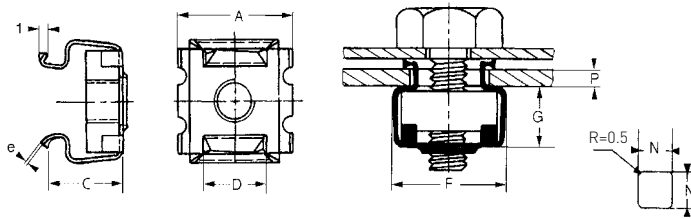


Cage nut with earth continuity

“Earth continuity” cage nut with bent corners to guarantee grounding.

Material

Cage: Stainless steel
 Nut: Steel, zinc plated
 stainless steel or brass on request



Thread size	Order description	P = Panel thickness	Hole size* □N	Nute size	A	C	D	e	F	G
M4	834 BX - EC	1.5 - 2.0	8.3	10x10x4.5	12.0	8.5	7.2	0.45	12.2	6.0
M5	835 BX - EC									
M6	836 BX - EC									
M4	954 BX - EC	1.5 - 2.0	9.5	11x11x4.5	13.2	9.5	8.2	0.45	13.5	6.0
M5	955 BX - EC									
M6	956 BX - EC									
M8	1408 CX - EC	2.3 - 3.9	14.0	17x17x7.5	20.4	16.5	12.6	0.60	20.4	10.5
M10	1410 CX - EC									
M12	1412 CX - EC									

*Slit width must be reduced by approx 0.3 mm when using in long holes.

Cage nuts

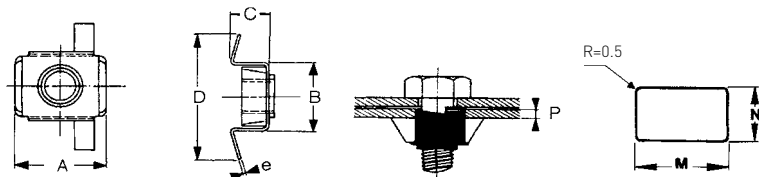
FASTEKS KLIPKO®



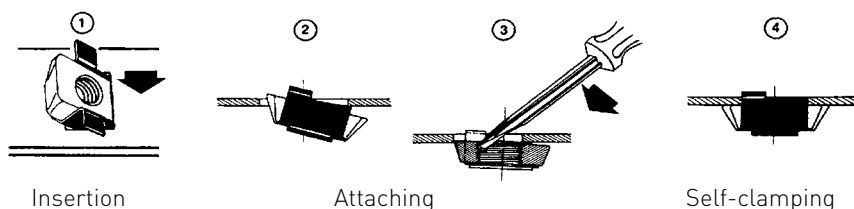
Cage nut, for front assembly

Material

Cage: Stainless steel
Nut: Steel, zinc plated



Assembly



Insertion

Attaching

Self-clamping

Thread size	Order description	P = Panel thickness	Hole size		A	B	C	D	e
			N + 0.2 - 0	M +/- 0.2					
M5	D 813.5 - A	0.5 - 0.6	8.0	13.0	14.0	12.4	5.6	20.4	0.5
	D 813.5 - B	0.7 - 0.8					5.8		
	D 813.5 - C	0.9 - 1.0					6.0		
	D 813.5 - D	1.2 - 1.3					6.3		
	D 813.5 - E	1.5 - 1.6					6.6		
	D 813.5 - F	1.7 - 1.8					6.8		
	D 813.5 - G	2.0 - 2.1					7.1		
M6	D 813.6 - A	0.5 - 0.6	8.0	13.0	14.0	12.4	5.6	20.4	0.5
	D 813.6 - B	0.7 - 0.8					5.8		
	D 813.6 - C	0.9 - 1.0					6.0		
	D 813.6 - D	1.2 - 1.3					6.3		
	D 813.6 - E	1.5 - 1.6					6.6		
	D 813.6 - F	1.7 - 1.8					6.8		
	D 813.6 - G	2.0 - 2.1					7.1		
M6	D 914.6 - A	0.5 - 0.6	9.0	14.0	15.5	13.6	6.3	21.6	0.5
	D 914.6 - B	0.7 - 0.8					6.5		
	D 914.6 - C	0.9 - 1.0					6.7		
	D 914.6 - D	1.2 - 1.3					7.0		
	D 914.6 - E	1.5 - 1.6					7.3		
	D 914.6 - F	1.7 - 1.8					7.5		
	D 914.6 - G	2.0 - 2.1					7.8		
M8	D 1610.8 - A	0.5 - 0.6	10.5	16.5	17.5	15.8	7.7	26.0	0.6
	D 1610.8 - B	0.7 - 0.8					7.9		
	D 1610.8 - C	0.9 - 1.0					8.1		
	D 1610.8 - D	1.2 - 1.3					8.4		
	D 1610.8 - E	1.5 - 1.6					8.7		
	D 1610.8 - F	1.7 - 1.8					8.9		
	D 1610.8 - G	2.0 - 2.1					9.2		

Tools for cage nuts

FASTEKS KLIPKO®

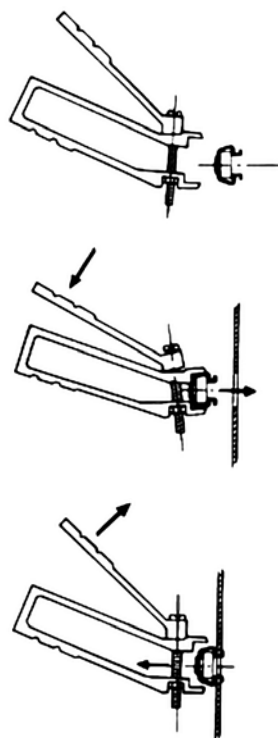
Pincer

- Pincer for quick and exact assembly of FASTEKS KLIPKO® Standard cage nuts and cage nuts with earth continuity
- Quick assembly
- Safe installation
- No damage to the assembly surface

Order description: NR.548653



This pincer allows quick and exact assembly of cage nuts for hole sizes 8.3 x 8.3 and 9.5 x 9.5 mm. It can be used for threads M4, M5 and M6.



Metal tongue

- Simple metal tongue for assembling and disassembling of all FASTEKS KLIPKO® cage nuts

Order description: 29-DP134-9-12



Blind nuts

FASTEKS STECKO®



Metal version

- Tool-free blind installation (hollow section)

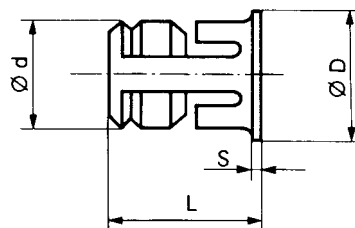
Material

Steel, zinc plated

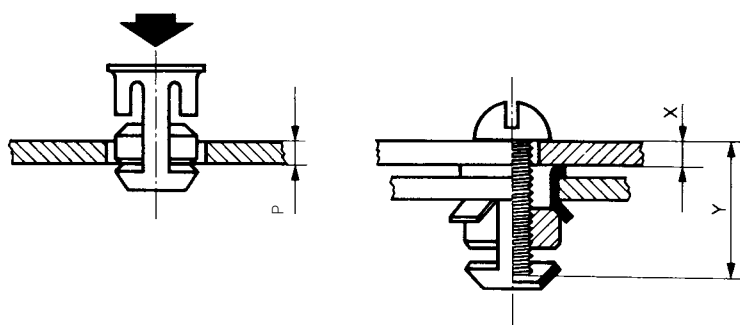
Surface options

HG: Zinc, white thick film passivation CR3

EK: Zinc-nickel, clear passivation + sealing



Assembly



3-D Data: <http://kvt.partcommunity.com>

Thread size	Order description	Ø d	Hole ± 0.1	P = Panel thickness	Ø D ca.	S	L ± 0.4	Y min.
M4	CV 4822HG	7.1	7.2	0.7 - 3	8.5	0.5	9.2	7 + X
	CV 4824HG	9.9	10.1	0.7 - 4	11.5	0.6	13.0	10 + X
M5	CV 4829HG	8.4	8.5	0.7 - 3	10.0	0.5	11.0	9 + X
	CV 4829EK	8.4	8.5	0.7 - 3	10.0	0.5	11.0	9 + X
	CV 4825HG	9.9	10.1	0.7 - 4	11.5	0.6	13.0	10 + X
M6	CV 4826HG	9.9	10.1	0.7 - 4	11.5	0.6	13.0	10 + X
M8	CV 4828HG	12.8	13.2	1.0 - 6	15.5	1.0	18.2	15 + X

Blind nuts

FASTEKS NILKO®



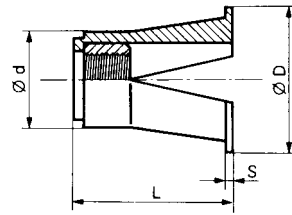
Polyamide version

- Tool-free blind installation (hollow section)
- Good chemical resistance to oil and grease
- Dielectric (non conductive)

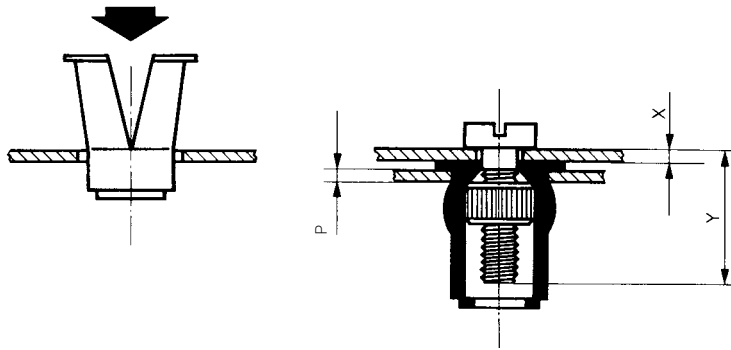
Material

Cage: Polyamide

Nut: Brass



Assembly



3-D Data: <http://kvt.partcommunity.com>

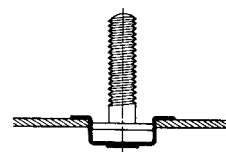
Thread size	Order description	$\varnothing d$	Hole	P = Panel thickness	$\varnothing D$ ca.	S	L	Y min.	Tightening torque: *
M3	CP 3513	5.0	5.2 + 0.10	0.5 - 3	8.0	0.3	7.5	6 + X	0.8 Nm
M4	CP 3514	6.0	6.3 + 0.10	0.5 - 4	9.4	0.4	9.5	8 + X	1.4 Nm
M5	CP 3515	8.0	8.1 + 0.15	0.5 - 5	11.0	0.5	12.0	10 + X	2.0 Nm
M6	CP 3516	10.3	10.5 + 0.20	0.5 - 6	14.4	0.6	15.0	12 + X	3.5 Nm

*The tightening torque values are indicated at average panel thickness and assembly hole and can deviate +/- 25%.
 - Maximum tightening torque: Max. panel thickness with min. hole
 - Minimum tightening torque: Min. panel thickness with max. hole

Overview of product range

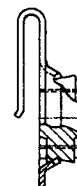
Cage screw

Cage screw for blind assembly in the final phase of the fitting – primarily in closed housings, longitudinal beams and profiles. Provides a good rear support surface, especially in thin sheets. Can be installed immediately after painting or enameling by clipping and also removed quickly.



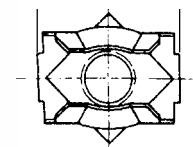
Cage nut

These stretched-form cage nuts offer a large support surface. The flexible cage can be mounted easily by hand, particularly in the sheet metal center.



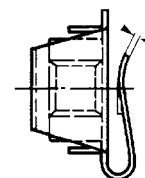
Cage nut

This type of nut is suitable for blind assembly and solves problems concerning „sliding feet“ (in „white goods“, for example). It can be installed quickly from the outside after the surface has been varnished or enamelled. Its self-locking effect on the thread ensures consistent security and allows adjustments.



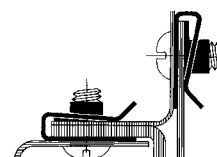
Cage nut

After painting or enameling, this nut is simply pushed over the edge of the sheet metal or angle section. It is self-locking and can be used in assembly with round holes as well as elongated holes due to its range of motion.



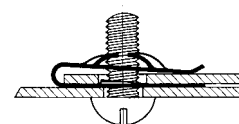
Snap-nut

Metric nut for parts from 0.5 to 4 mm panel thickness. The central part remains constantly perpendicular to the screw axis. The elastic tightening of the nut is ideal for sensitive materials. High torque is possible.



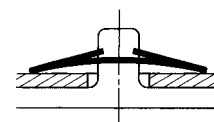
Speed-nut

The ideal fastener for applications where blind assembly is required. Very economical due to considerable time savings during assembly. All cost-intensive operations as thread cutting, riveting, welding, recutting, painting, etc. are eliminated.



Lock ring

Is pressed on plain pins and allows an elastic connection of light parts. Extremely economical and vibration resistant.



Overview of product range

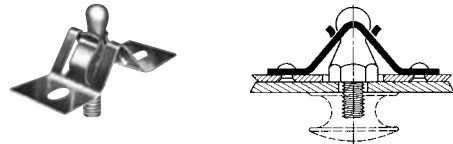
Plastic rivet

A solution for light connections. Advantages: Blind assembly – complete hole locking – high insulation capacity – vibration resistant – corrosion resistant – removable – reusable.



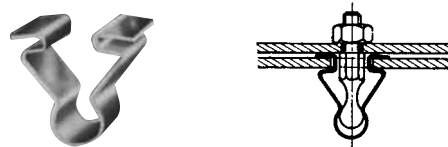
Spring clip

Suitable as a locking system. Is clipped to a suitable fitting and particularly useful when opening and closing is required through simple push-pull motion. Typical applications: doors, safety barriers, hoods, detachable cover plates and other parts that need to be opened and closed quickly and safely.



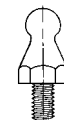
Spring clip

Assembled from the outside and kept in position through optimal expansion. It is very compact and distinguished by a good price-performance ratio.



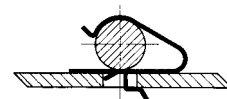
Stud

The nipple is available with internal or external thread or for caulking.



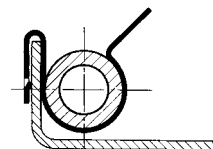
Clip

This clip provides numerous applications for pipes and cables. Simple clamping; no tool necessary.



Clip

Allows an elastic connection of wires, cables and pipes. Assembly by clamping, locks itself onto the sheet metal.



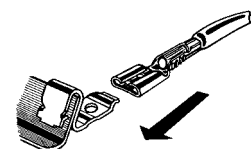
Clip

U-shaped clip for various applications with light joints, for example when simple clamping on sheet metal is sufficient.



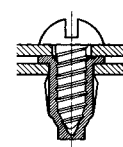
Clip

with earth continuity. This clip combines efficiency and effectiveness. It is used for grounding between sheet metal parts and electrical parts.



Plastic nut

This nut's unique properties resolve many issues: Blind screwing, elastic tightening, self-locking, and thermal and elastic insulation. It can be tightened and released several times.



KVT-Fastening – Fastening technology



Blind rivet nuts



Blind rivet technology



Thread inserts



Self-clinching fasteners



Stud welding systems¹⁾



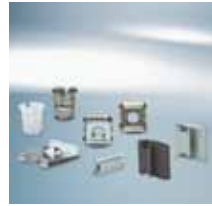
Lock nuts



Bonding fasteners



Access solutions



Quick fastening elements and clips



Quick release pins and spring plungers



Adhesives and sealants¹⁾



Construction fasteners²⁾



Special processes²⁾



Plugs



Pressure intensifiers³⁾



Installation technology



Quick connectors⁴⁾

Fastening, sealing and flow control solutions for complex applications

The extensive KVT-Fastening portfolio offers optimal solutions for your most challenging applications. The products included in this catalog represent only a selection from our entire product portfolio. Upon request, we will be pleased to provide additional information or an individual consultation to you.

Intelligent logistic systems

Bossard SmartBin and SmartLabel are intelligent logistics systems which monitor stock with total reliability and ensure stock replenishment automatically. An online system transmits the data to the Bossard server, and this – if necessary – triggers an order. These systems ensure quick and easy availability of C-parts while production is running.



Logistic systems

Competent analysis for efficient solutions

KVT-Fastening's highly qualified experts analyze the given task at hand. Based on this sound understanding of the project, they then develop ideal solutions that are economical, efficient, and safe.



Solutioneering

For more information about our range of products and order at our E-shop, please visit www.kvt-fastening.com

¹⁾ Not available in Germany. ²⁾ Only available in Switzerland. ³⁾ Not available in Switzerland. ⁴⁾ Not available in Austria.

KVT-Fastening AG

Dietikon/Zürich | Switzerland
Tel: +41 44 743 33 33
info-CH@kvt-fastening.com
www.kvt-fastening.ch

KVT-Fastening GmbH

Illerrieden | Germany
Tel: +49 7306 782-0
info-DE@kvt-fastening.com
www.kvt-fastening.de

KVT-Fastening GmbH

Asten/Linz | Austria
Tel: +43 7224 67 09 0
info-AT@kvt-fastening.com
www.kvt-fastening.at

KVT-Fastening Sp. z o.o.

Radom | Poland
Tel: +48 58 762 17 80
info-PL@kvt-fastening.com
www.kvt-fastening.pl

KVT-Fastening S.R.L.

București | Romania
Tel: +40 37 1381155
info-RO@kvt-fastening.com
www.kvt-fastening.ro

KVT-Fastening spol. s.r.o.

Bratislava | Slovakia
Tel: +421 9 11102510
info-SK@kvt-fastening.com
www.kvt-fastening.sk

KVT-Tehnika pritrjevanja d.o.o.

Ljubljana | Slovenia
Tel: +386 1 2808019
info-SI@kvt-fastening.com
www.kvt-fastening.si

KVT-Fastening s.r.o.

Brno | Czech Republic
Tel: +420 547 125200201
info-CZ@kvt-fastening.com
www.kvt-fastening.cz

KVT-Fastening Kft.

Budapest | Hungary
Tel: +36 1 769 0925
info-HU@kvt-fastening.com
www.kvt-fastening.hu



www.kvt-fastening.com

