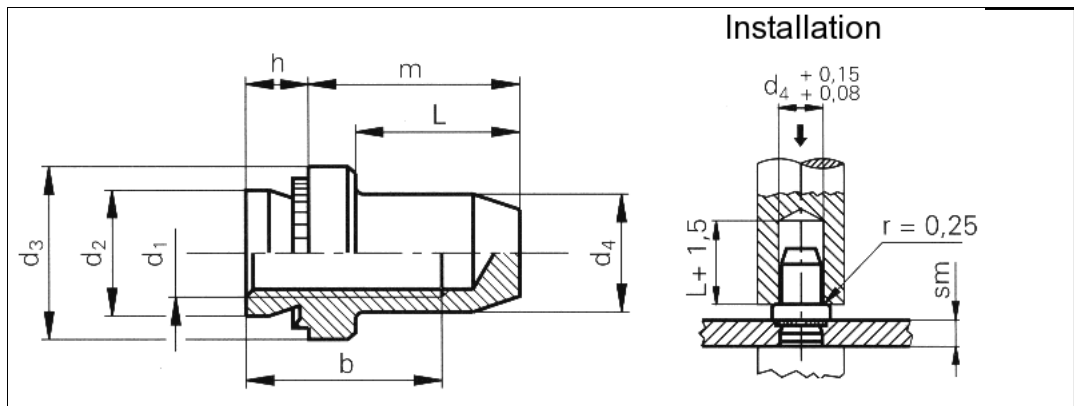


Data sheet - B-M5-2

Blind self-clinching nuts



3D-Data available	
Order description	B-M5-2
Thread d1	M5
Hole-Ø in the sheet +0.08 0	6.40 mm
Max. d2	6.33 mm
d3 ±0.25	8.75 mm
Max. d4	6.02 mm
Min. b	7.1 mm
Max. L	9.8 mm
m ±0.25	11.2 mm
Max. h	1.38 mm
Min. sm	1.4 mm
Min. edge distance up to the hole centre	7.1 mm
Material	Case-hardened zinc-plated carbon steel.
Use	For sheet hardnesses up to HRB 80.
Information	Closed thread end protects against contamination etc.
Tools	
Insertion machines	

uniform resource locator: